



SERHIDRA S.A.S

Minería y Construcción



SERHIDRA S.A.S
Minería y Construcción

www.serhidra.com

Contáctanos



Dirección:

Parque empresarial Santo Domingo Manzana B
Bodega 17 Mosquera – Cundinamarca



Celular:

315 356 22 62 - 318 291 74 77

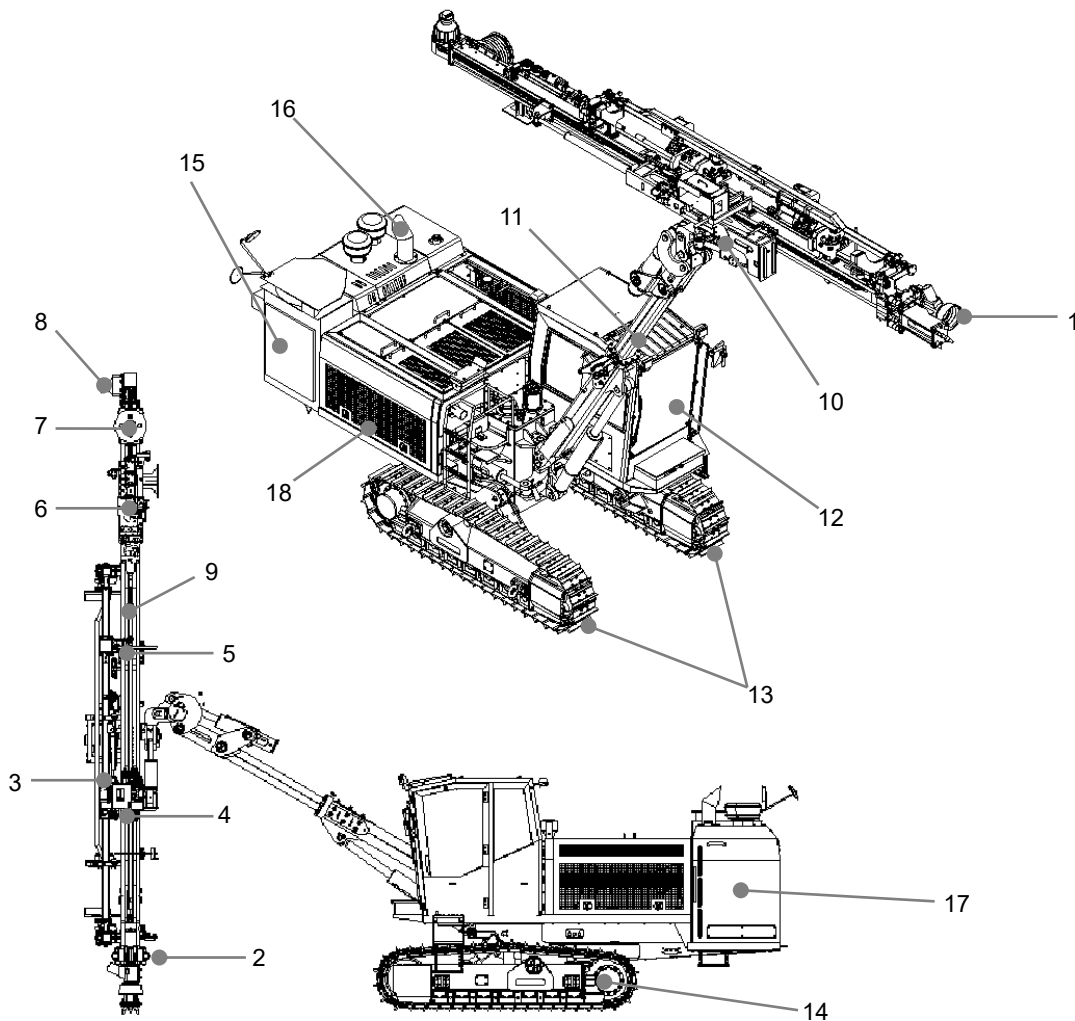


Correo:

administracion@serhidra.com

2. Product information

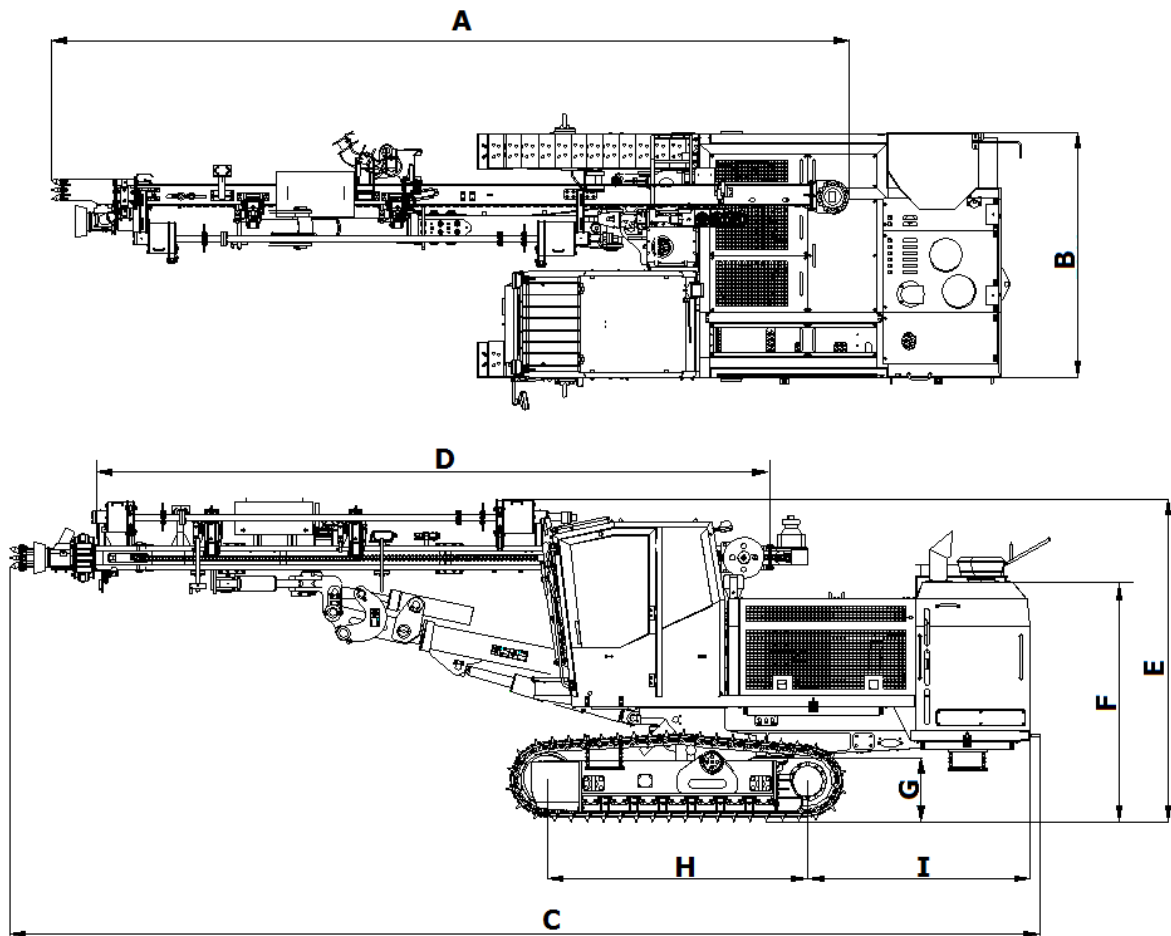
2.1 Names of components



No.	Description	No	Description
1	Hood	10	Guide shell mount
2	Centralizer	11	Boom
3	Auto rod changer	12	Cabin
4	Roller	13	Track
5	Sleeve Clamp	14	Track motor
6	Drifter	15	Dust collector
7	Hose reel	16	Muffler
8	Feed motor	17	Fuel tank
9	Mast	18	Bonnet

* For more details, please refer to parts manual.

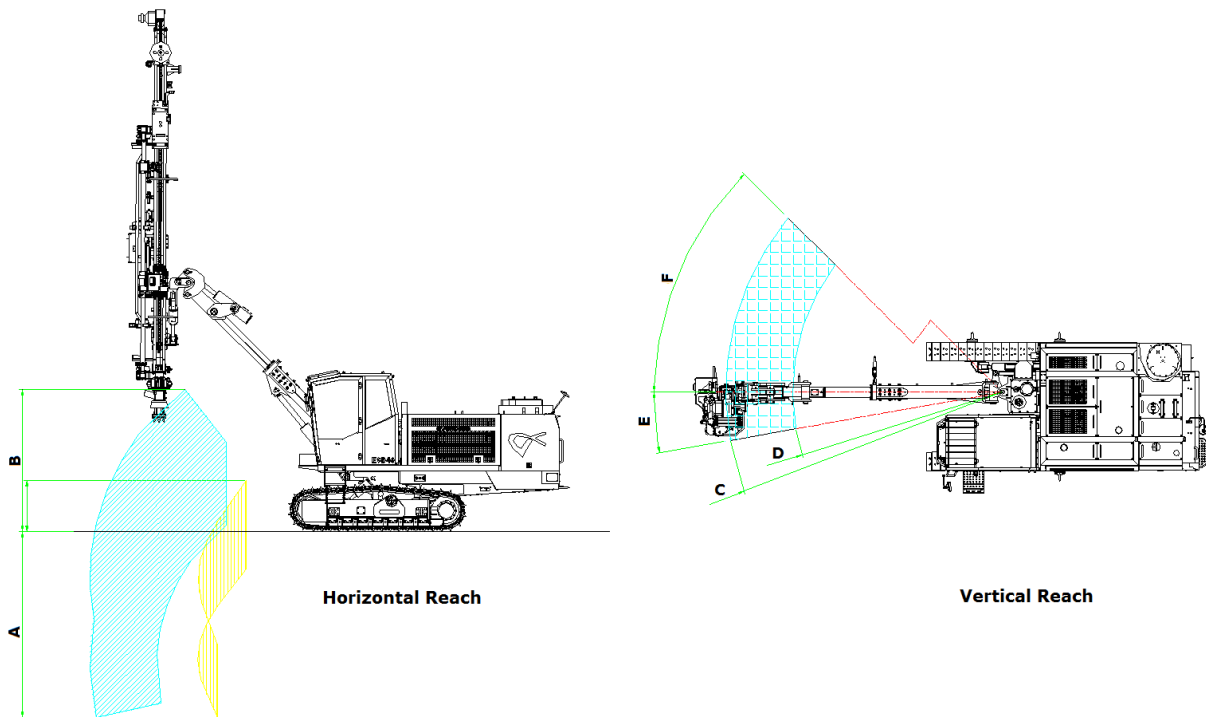
2.2 External Dimensions



Dimensions (unit : mm)

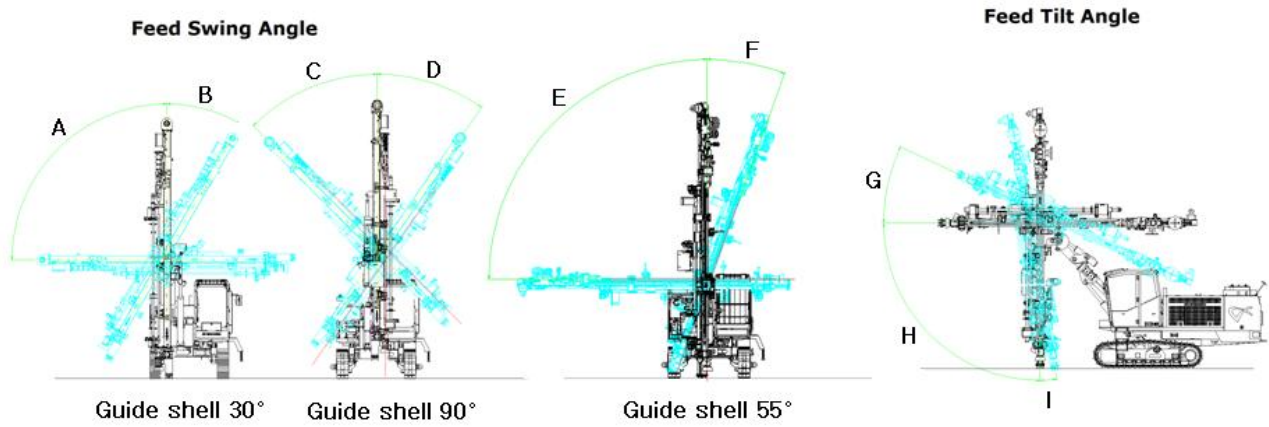
Drill Rig Model code	ECD35 II	ECD35E II	ECD40 II	ECD40E II	ECD45 II	ECD45E II
A	6,896		7,500		7,735	
B	2,305		2,305		2,305	
C	8,970	9,055	9,165	9,250	9,210	9,340
D	5,740		6,350		6,580	
E	2,835		2,855		2,855	
F	2,128		2,110		2,110	
G	555		555		555	
H	2,480		2,480		2,480	
I	2,100		2,200		2,200	

2.3. Working Dimensions



Working dimensions (unit : mm)

Drill Rig Model code	ECD35 II	ECD35E II	ECD40 II	ECD40E II	ECD45 II	ECD45E II
A	3,400		3,400		3,400	
B	920	2,600	920	2,600	920	2,600
C	-	5,040	-	4,990	-	4,990
D	2,840	3,830	2,815	3,790	2,815	3,790
E	10°		10°		10°	
F	45°		45°		45°	



Mast moving angles

Drill Rig Model code	ECD35	ECD35E	ECD40	ECD40E	ECD45	ECD45E
A	90°		90°		90°	
B	30°		30°		30°	
C	45°		45°		45°	
D	35°		35°		35°	
E	90°		90°		90°	
F	7°		7°		7°	
G	30°	25°	30°	25°	30°	25°
H	90°		90°		90°	
I	20°	10°	20°	10°	20°	10°

2.4 Technical specifications

Crawler Drill Rig		ECD35 II / ECD35E II		ECD40 II / ECD40E II		ECD45 II / ECD45E II	
General Specification	Overall Height (mm)	2,860		2,860		2,860	
	Overall Length (mm)	9,050 / 9,180		9,290		9,290 / 9,340	
	Overall Width (mm)	2,305		2,305		2,305	
	Weight (kg)	11,800 / 12,500		13,000 / 13,700		13,300 / 14,000	
Drifter							
Model	ED-150	EHD160	EHD185		EHD210	HC150 (Montabert)	
Overall length (mm)	954	1,285	1,285		1,285	1,437	
Weight (kg)	229	236	236		236	218	
Output power (kW)	15.9	16	18.5		21	21	
Blow frequency (bpm), Max	2,600	3,000	3,000		3,000	2,500	
Rotation speed (rpm), Max	200	170	170		140	130	
Tramming							
Center distance of tracks (mm)	1,970		1,970		1,970		
Width of shoes (mm)	330		330		330		
Oscillation angle	± 11°		± 11°		± 11°		
Traveling speed (km/hr), Max	3.5		3.5		3.5		
Climbing angle, Max	30°		30°		30°		
Engine							
Model	Cummins 6BT5.9-C		CAT C7	Cummins QBS 6.7	CAT C7	Cummins 6CTAA8.9-C	
Rated output (HP)	165 HP / 2,500 rpm		225HP / 2,200 rpm	175HP / 2,500 rpm	225HP / 2,200 rpm	205 HP / 2,200 rpm	
Rate (Environmental)	Tier 1		Tier 3	Tier 3	Tier 3	Tier 2	
Fuel tank Capacity (liter)	305		357	320	350		
Fuel Type	Diesel						
Hydraulic system							
Variable discharge pump	Piston pump x 2						
Fixed discharge pump	Gear pump x 2		Gear pump x 3				
Compressor							
Discharge air flow (m³/min)	5.4		6		8		
Air pressure (kg/cm²)	10.5		10.5		10.5		
Bit and rod							
Bit diameter (mm)	Ø64 ~ Ø89		Ø64 ~ Ø102		Ø70 ~ Ø115 (Ø127)		
Drill steel (Rod size)	T38 (T45)		T45 (T38)		T51 (T45)		
Rod length (mm)	3,050 / 3,660		3,050 / 3,660		3,050 / 3,660		
Drilling depth (m), Max.	18		21		21		
Dust Collector							
Capacity (m³/min)	24		24		28		
Number of installed filters	6		6		6		

Available features (standard & option)

Drill rig model code	ECD35	ECD40	ECD45
Precleaner	STD	STD	STD
Rod thread greasing system	STD	STD	STD
LED working light	OPT	OPT	OPT
Montabert Drifter (HC150)	-	-	OPT
Centralized auto greasing system	OPT	OPT	OPT
Coolant pre-heating system	OPT	OPT	OPT
Warning beacon	OPT	OPT	OPT
Digital angle gauge (MDS-1000)	OPT	OPT	OPT
Drill monitoring system (MDS-2000)	OPT	OPT	OPT
Triple grouser track	OPT	OPT	OPT

Note: STD : Standard , OPT : Option, - : Not available

Drill monitoring system

*** MDS-1000**

- Drilling Angle : (+60° ~ -60°, X, Y axis)
- Drilling Depth



*** MDS-2000**

- Drilling Angle : (+60° ~ -60°, X, Y axis)
- Drilling depth
- Engine monitoring (electric control engine only)
- Drill stop
- User data
- GPS
- Remote engine control (anti thief)

