



BULLSTERN

DEMOLITION & RECYCLING ATTACHMENT



Optimize the Performance of Your Excavator with Bullstern Attachment

THE UNRIVALLED

www.bullstern.com

VIBRO RIPPER

(V-Series)

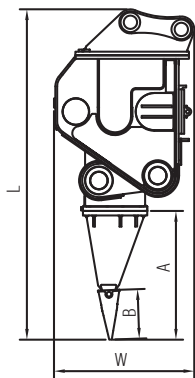


ULTIMATE IN PRODUCTIVITY

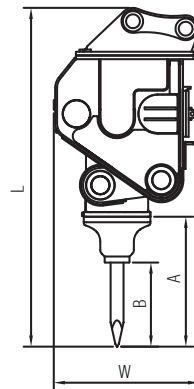
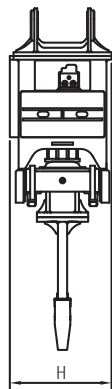
BULLSTERN RIPPER is normally applied in areas, where drilling and blasting with explosives is not permitted for safety and environmental reasons or simply more expensive. Also, suitable for demolition, mining, etc. It exceeds the hydraulic breaker production in 80% of job applications.

TECHNICAL SPECIFICATIONS		V220	V320	V450	V550	
Carrier Weight Range	ton	20 - 28	29 - 36	37 - 46	47 - 65	
Frequency	bpm	2500 - 3000	2500 - 2800	2200 - 2500	2100 - 2300	
Setting Pressure	bar(psi)	250(3626)	250(3626)	280(4061)	280(4061)	
Return Pressure	bar(psi)	6(87)	6(87)	6(87)	6(87)	
Required Oil Flow	L/min	170 - 200	210 - 230	250 - 260	290 - 310	
Tooth	Service Weight	kg	2845	3775	4650	6280
	A x B	mm	1102 x 485	1250 x 485	1320 x 555	1442 x 555
	L x W x H	mm	2885 x 1305 x 822	3198 x 1415 x 900	3448 x 1517 x 980	3701 x 1571 x 1100
Chisel	Service Weight	kg	2635	3825	4680	6535
	A x B	mm	1078 x 678	1196 x 761	1296 x 856	1405 x 910
	L x W x H	mm	2861 x 1305 x 822	3143 x 1415 x 900	3424 x 1517 x 980	3664 x 1571 x 1100
	Tool Size	mm	Ø110 x 1000	Ø120 x 1150	Ø130 x 1200	Ø140 x 1300

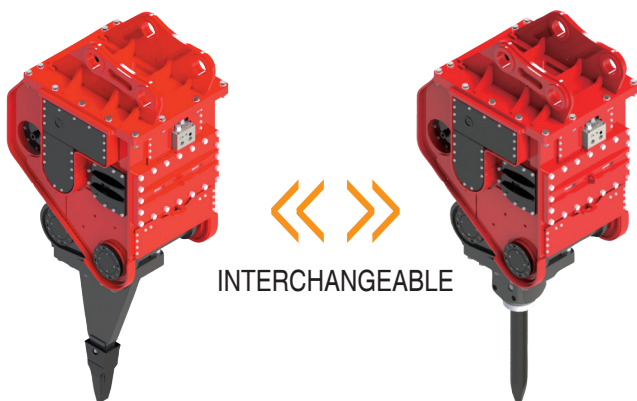
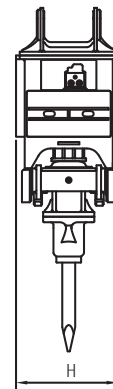
※ Above specifications are subject to change without prior notice for performance enhancement.



(T)



(C)

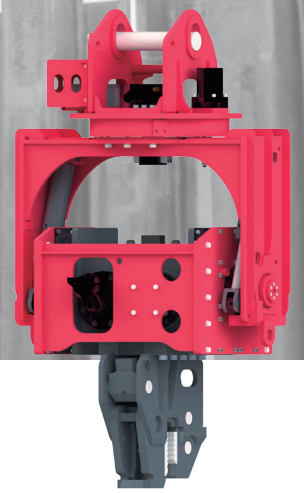


BENEFITS

- ✓ 3 TO 5 TIMES HIGHER PRODUCTIVITY THAN HYDRAULIC BREAKERS
- ✓ LESS DISTURBANCE OF THE SURROUNDINGS (NOISE & DUST)
- ✓ BIGGER AND HEAVIER ECCENTRIC GEARS TO MAXIMIZE IMPACT POWER
- ✓ EASY MAINTANANCE & BETTER WOKABILITY

VIBRO HAMMER

(W-Series / F-Series)

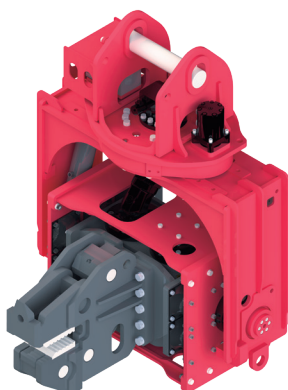
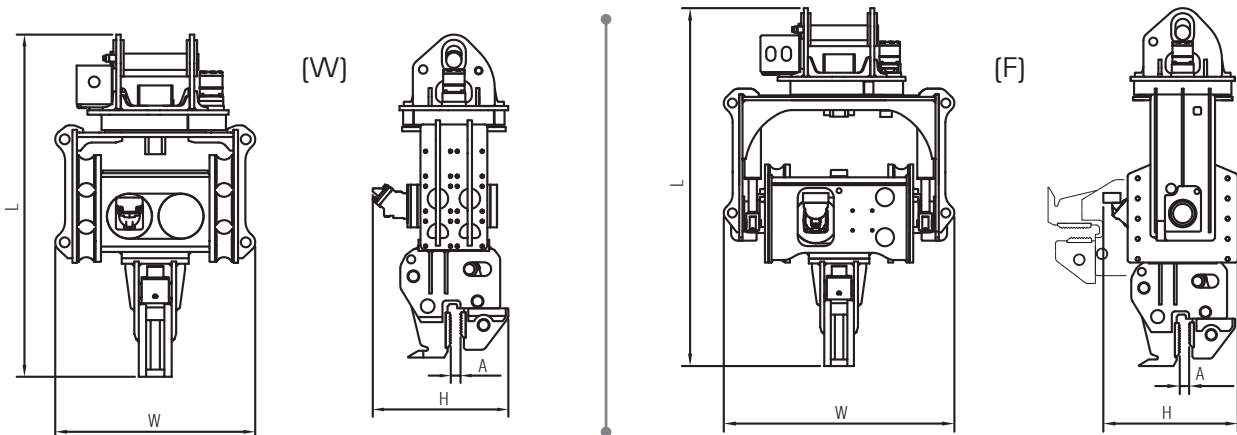


TIME-EFFICIENT WITH LESS LABOR

BULLSTERN TILTING TYPE PILE DRIVER is the real time saver for pile driving jobs. With picking up a sheet pile in a horizontal position by 90-degree tilting function, the manual interference is reduced. In other words, almost nonstop piling operation is possible so that the operator is able to drive a sheet pile in a less cycle time than the basic type pile driver.

TECHNICAL SPECIFICATIONS			W250 / F250	W300 / F300	W400 / F400
Carrier Weight Range	ton		18 - 26	25 - 35	34 - 45
Frequency	bpm		3800	3200	3100
Eccentric Moment	kgm		3.6	6.2	7.6
Centrifugal Force	kN(ton)		580(58)	700(70)	820(82)
Setting Pressure	bar(psi)		250(3625)	250(3625)	280(4061)
Required Oil Flow	L/min		170 - 200	210 - 230	250 - 260
Slewing / Tilting	degree		360 / 90	360 / 90	360 / 90
A	mm		57	57	57
W	Service Weight	kg	1550	1700	1800
	L x W x H	mm	1838 x 1044 x 755	1921 x 1106 x 796	1923 x 1190 x 841
F	Service Weight	kg	1850	2189	2384
	L x W x H	mm	2057 x 1353 x 749	2182 x 1409 x 793	2189 x 1493 x 875
Extension Boom Weight		kg	645	730	925

※ Above specifications are subject to change without prior notice for performance enhancement.

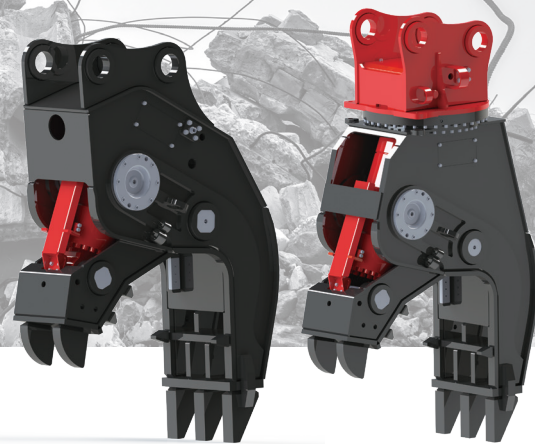


BENEFITS

- ✓ HIGH QUALITY ELECTRICAL HARNESS
- ✓ 30% BETTER EFFICIENCY THAN BASIC TYPE
- ✓ EASY-CLAMPING WITH NO EXTRA GROUND-LEVEL WORK
- ✓ LOW-FRICTION & LONG LASTING CYLINDER
- ✓ 360-DEGREE ROTATION / 90-DEGREE TILTING

PULVERIZER

(P-Series)

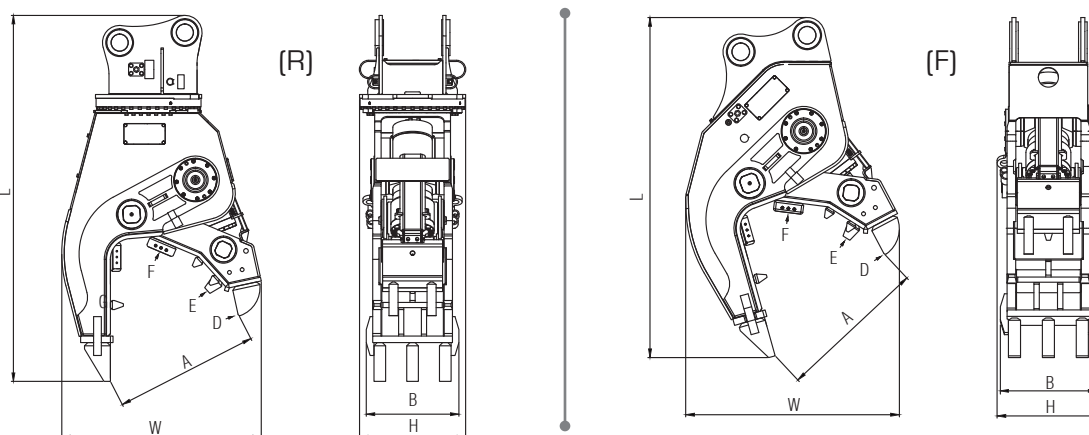


UNCOMPROMISED DURABILITY

BULLSTERN PULVERIZER is the ideal tools for demolition waste recycling, concrete crushing or the separation of rebars encountered within the concrete in the secondary reduction stage. All of the models are equipped with speed valve which allows faster cycle times. Also, one-piece changeable tooth system eliminates the downtime of welding and enables easy on-site maintenance.

TECHNICAL SPECIFICATIONS		P250R	P250F	P350R	P350F
Carrier Weight Range	ton	20 - 30		30 - 40	
Crushing Force	D ton	54		70	
	E ton	68		108	
Cutting Force (Blade)	F ton	165		257	
	Blade Length	150		180	
Setting Pressure	bar(psi)	320(4641)		320(4641)	
Oil Flow Rate	L/min	180 - 220		250 - 300	
A	mm	1085		1,130	
B	mm	584		716	
Service Weight	kg	2060	1742	3028	2597
L x W x H	mm	2510 x 1312 x 692	2183 x 1422 x 674	2827 x 1540 x 820	2520 x 1593 x 765
Speed Up Valve		STD.		STD.	

※ Above specifications are subject to change without prior notice for performance enhancement.

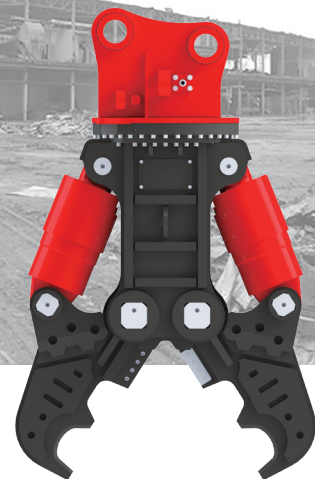


BENEFITS

- ✓ AVAILABLE WITH OR WITHOUT ROTATION
- ✓ INTEGRATED SPEED VALVE FOR FAST CYCLE TIME
- ✓ 4 -WAY INDEXABLE BLADES PROVIDE 4 USABLE CUTTING EDGES
- ✓ ONE-PIECE CHANGEABLE TOOTH PLATES
- ✓ TEETH ARE MADE OF HARDOX STEEL

MULTI PROCESSOR

(M-Series)

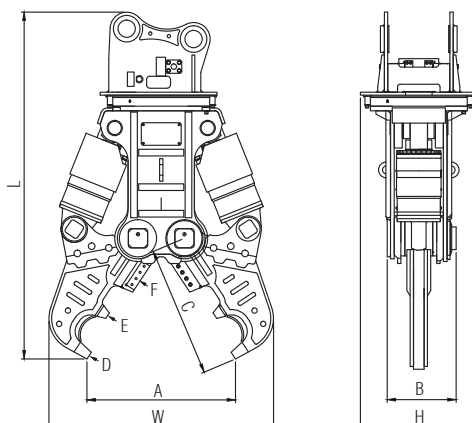


REMARKABLE COMBINATION

BULLSTERN MULTI PROCESSOR is a perfect tool for demolition applications, specifically for buildings made from steel beams because it is designed for not only crushing concrete but also removing and cutting rebars. Unlike other demolition tools, it can be used where total control is needed in order to avoid noise and vibration.

TECHNICAL SPECIFICATIONS			M250	M350
Carrier Weight Range	ton		20 - 30	30 - 40
Crushing Force	D	ton	73	127
	E	ton	125	226
Cutting Force (Blade)	F	ton	355	430
Blade Length	mm		180	215
Setting Pressure	bar(psi)		320(4641)	320(4641)
Oil Flow Rate	lpm		180 - 220	250 - 300
Rotation Setting Pressure	bar		140	140
A	mm		1000	1120
B x C	mm		429 x 945	520 x 987
Service Weight	kg		2370	3433
L x W x H	mm		2400 x 1497 x 692	2610 x 1690 x 880
Speed Up Valve			STD	STD

※ Above specifications are subject to change without prior notice for performance enhancement.

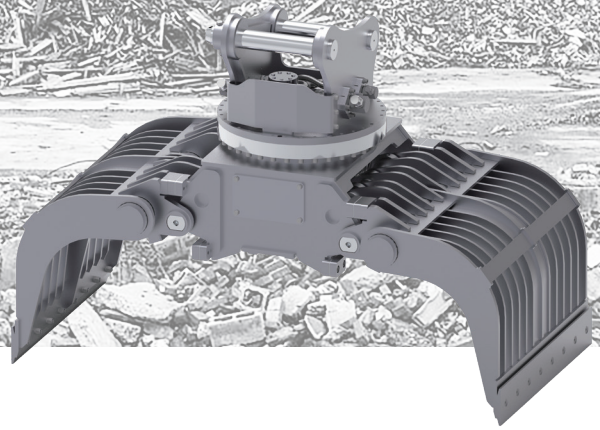


BENEFITS

- ✓ INCREASED VERSATILITY VIA INTERCHANGEABLE JAW SETS
- ✓ INTEGRATED SPEED VALVE FOR FAST CYCLE TIME
- ✓ 360° HYDRAULIC ROTATION IN BOTH DIRECTIONS
- ✓ MADE OF HIGH STRENGTH, ABRASION RESISTANT STEEL
- ✓ TEETH ARE MADE OF HARDOX STEEL

SORTING GRAB

(SG-Series)

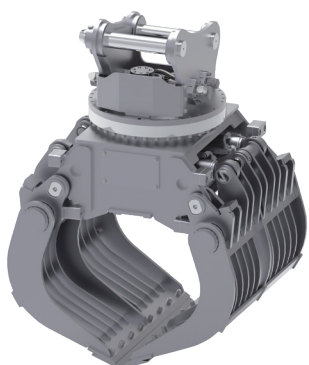
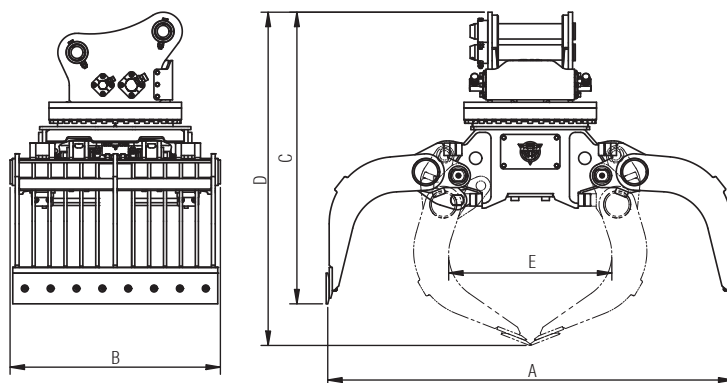


PRODUCTIVE MATERIAL HANDLING

BULLSTERN SORTING GRAB is made with abrasion-resistant steel and extremely effective for sorting and loading a variety of different materials as found in demolition debris, waste and recycling operations. Thanks to the interchangeable blades and the 360° rotation, it can handle large loads and odd shapes.

TECHNICAL SPECIFICATIONS			SG150	SG200
Carrier Weight Range		ton	12 - 18	20 - 28
Max Opening Width	A	mm	1815	2115
Overall Width	B	mm	1831	2132
Overall Length	C	mm	1295	1522
	D	mm	1490	1740
Overall Height	E	mm	935	1098
Min Closed Inner width	F	mm	724	852
Max Closing Force		ton	4	5
Allowable Max. Setting Pressure		bar	380	380
Swing Motor Setting Pressure		bar	210	210
Recommended Oil Flow	Cylinder	L/min	110 - 200	150 - 250
	S / Motor	L/min	10 - 15	36 - 40
Service Weight		kg	940	1470

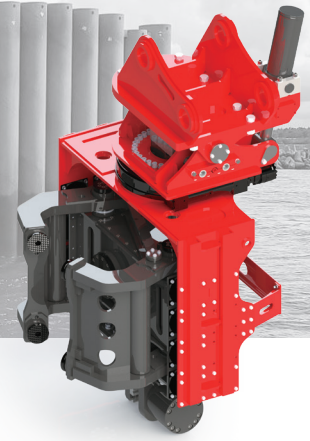
※ Above specifications are subject to change without prior notice for performance enhancement.



BENEFITS

- ✓ ROBUST & RELIABLE FRAME DUE TO HARDOX
- ✓ 360-DEGREE CONTINUOUS ROTATION
- ✓ SYNCHRONIZED JAWS CLOSING DESIGNED FOR SEVERE DUTY APPLICATIONS
- ✓ INTERCHANGEABLE BLADES

SIDE GRIP VIBRO HAMMER

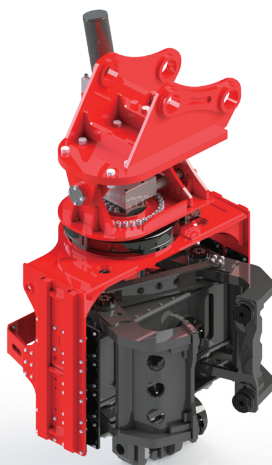
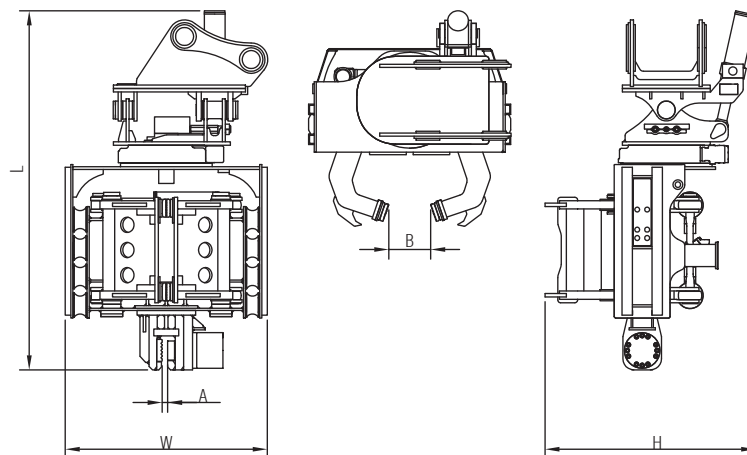


MOST VERSATILITY

BULLSTERN SIDE GRIP VIBRO HAMMER can handle, pitch and drive the sheet and tube piles. It is capable to accomplish the whole pile driving process without need of manual handling of the piles or assisting machinery - especially when limited space, head room or access is available.

TECHNICAL SPECIFICATIONS		S500	S650	S800
Carrier Weight Range	ton	20 - 28	29 - 36	37 - 50
Frequency	bpm	2700	2500	2450
Eccentric Moment	kgm	5.1	6.7	8.1
Centrifugal Force	kN(ton)	420(42)	470(47)	540(54)
Setting Pressure	bar(psi)	250(3625)	280(4061)	280(4061)
Required Oil Flow	L/min	170 - 200	210 - 230	250 - 260
Slewing / Tilting	degree	360 / ±30	360 / ±30	360 / ±30
Service Weight	kg	2900	3650	3800
L x W x H	mm	2400 x 1380 x 1480	2600 x 1465 x 1525	2600 x 1465 x 1525
A	mm	40	40	40
B	mm	280	300	300

※ Above specifications are subject to change without prior notice for performance enhancement.



BENEFITS

- ✓ DESIGNED FOR MANY TYPES OF PILES & BEAMS
- ✓ 2 JAWS OPENING FOR MORE AGILITY
- ✓ ENHANCED CLAMPING FORCE BY ACCUMULATOR
- ✓ 360-DEGREE ROTATION / ±30-DEGREE TILTING

HYDRAULIC BREAKER (B-Series)



PROVEN TECHNOLOGY

BULLSTERN BREAKERS have been designed for all types of carriers, from 1 to 50 tons. The mini-small range breakers are perfect for working in confined spaces such as inside buildings, along walls or in narrow trenches. The medium-large range breakers are made for a variety of applications, combining efficiency with high performance.

» MINI & SMALL RANGE

TECHNICAL SPECIFICATIONS		B45	B53	B68	B75	B100
Carrier Weight Range	ton	0.8 - 3	2.0 - 3.5	2 - 7	3.5 - 9	9 - 12
Tool Diameter	mm	45	53	68	75	100
Operating Pressure	bar	90 - 120	90 - 120	95 - 130	100 - 130	150 - 170
	psi	1305 - 1740	1305 - 1740	1375 - 1885	1450 - 1885	2175 - 2465
Setting Pressure	bar	150	150	170	170	210
	psi	2175	2175	2465	2465	3045
Impact Rate	bpm	600 - 1200	550 - 1000	450 - 900	450 - 900	450 - 900
Required Oil Flow	L/min	20 - 30	25 - 50	30 - 50	40 - 80	80 - 100
Service Weight	Box	106	175	275	395	785
	Open	97	160	260	360	765

※ Above specifications are subject to change without prior notice for performance enhancement.

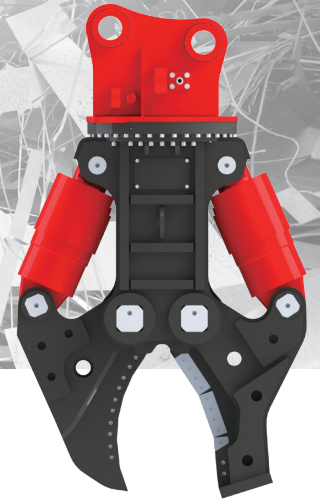
		<p>Suitable for universal use Very good penetration Even splitting effect distribution Slight torsion effect</p> <p>Moil Point</p>			<p>Mining, demolition work, ground work, foundations Very good splitting effect distribution Very good penetration Torsion effect</p> <p>Wedge Point</p>
--	--	---	--	--	---

» MEDIUM & LARGE RANGE

TECHNICAL SPECIFICATIONS		B120	B135	B150	B160
Carrier Weight Range	ton	13 - 18	18 - 26	28 - 35	33 - 50
Tool Diameter	mm	120	135	150	160
Operating Pressure	bar	150 - 170	160 - 180	160 - 180	170 - 190
	psi	2175 - 2465	2320 - 2610	2320 - 2610	2465 - 2755
Setting Pressure	bar	210	210	210	225
	psi	3045	3045	3045	3265
Impact Rate	bpm	400 - 900	400 - 800	400 - 800	300 - 600
Required Oil Flow	L/min	90 - 120	130 - 150	150 - 190	190 - 250
Service Weight	Box	1350	1860	2400	3190
	Open	1400	1790	2450	3280

Above specifications are subject to change without prior notice for performance enhancement.

SHEARS

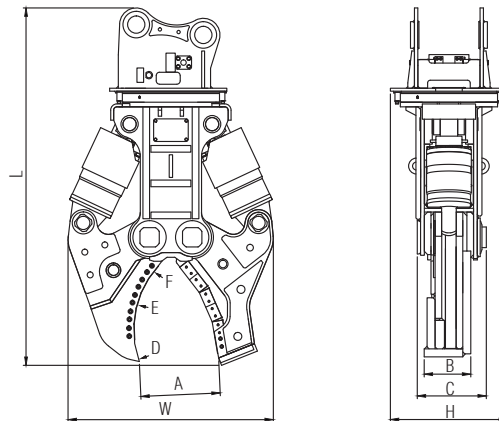


SHEARS

BULLSTERN SHEARS is used in scrap recycling yards and ensures a very high performances and an extraordinary level of efficiency and reliability. The cycle times are improved by the speed valve installed on all models.

TECHNICAL SPECIFICATIONS			C350	C450
Carrier Weight Range	ton		30 - 38	40 - 48
Service Weight	kg		3575	3400
Cutting Force	D	ton	485	627
	E	ton	210	244
	F	ton	121	142
Setting Pressure	bar(psi)		320(4641)	320(4641)
Oil Flow Rate	L/min		250 - 300	250 - 300
A	mm		600	720
B x C	mm		350 x 520	400 x 580
L x W x H	mm		2685 x 1542 x 880	3100 x 1835 x 895
Speed Up Valve			STD.	STD.

※ Above specifications are subject to change without prior notice for performance enhancement.



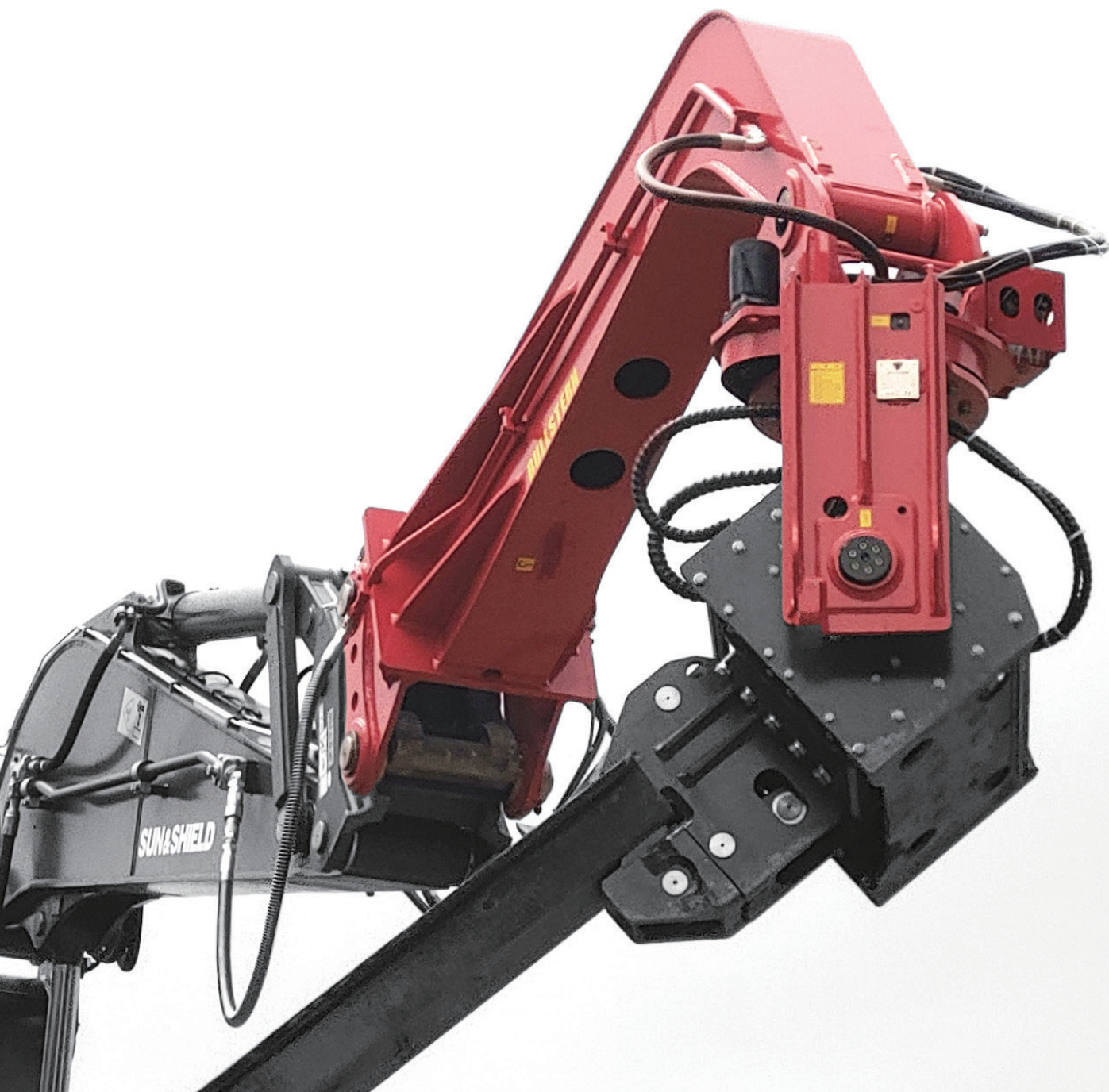
BENEFITS

- ✓ LESS TIME WAITING FOR JAW OPEN OR CLOSE TO CONTACT WITH SPEED-UP V/V
- ✓ CUTTING BLADES CAN BE FLIPPED IN TWO WAYS, TO USE 4 DIFFERENT CUTTING EDGES
- ✓ UNIQUE CUTTER ARRAY TO MAXIMIZE CUTTING FORCE
- ✓ ARMORED CYLINDER TO PREVENT DAMAGE
- ✓ 360-DEGREE ROTATION

BULLSTERN ATTACHMENT - A NAME THAT STANDS FOR QUALITY

Bullstern is the brand of excavator attachments designed and manufactured by S&C. Its popularity against the competition is mainly due to its better build quality and features, better serviceability and ease of operation as well as better productivity and uptime. The units are exported globally. The company works with reliable and long-term partner - creating a dealer network that covers and serves more than 30 countries.

bullstern.com



1-Factory: 80, Songnim-ro 307 beon-gil, Michuhol-gu, Incheon, Korea

2-Factory: 54, Wonjeon-ro, Seo-gu, Incheon, Korea

Tel: +82-32-864-7015 e-mail: info@bullstern.com

**MADE IN
KOREA**

